

HOW TO BE CARBON NEUTRAL BY 2050 ?

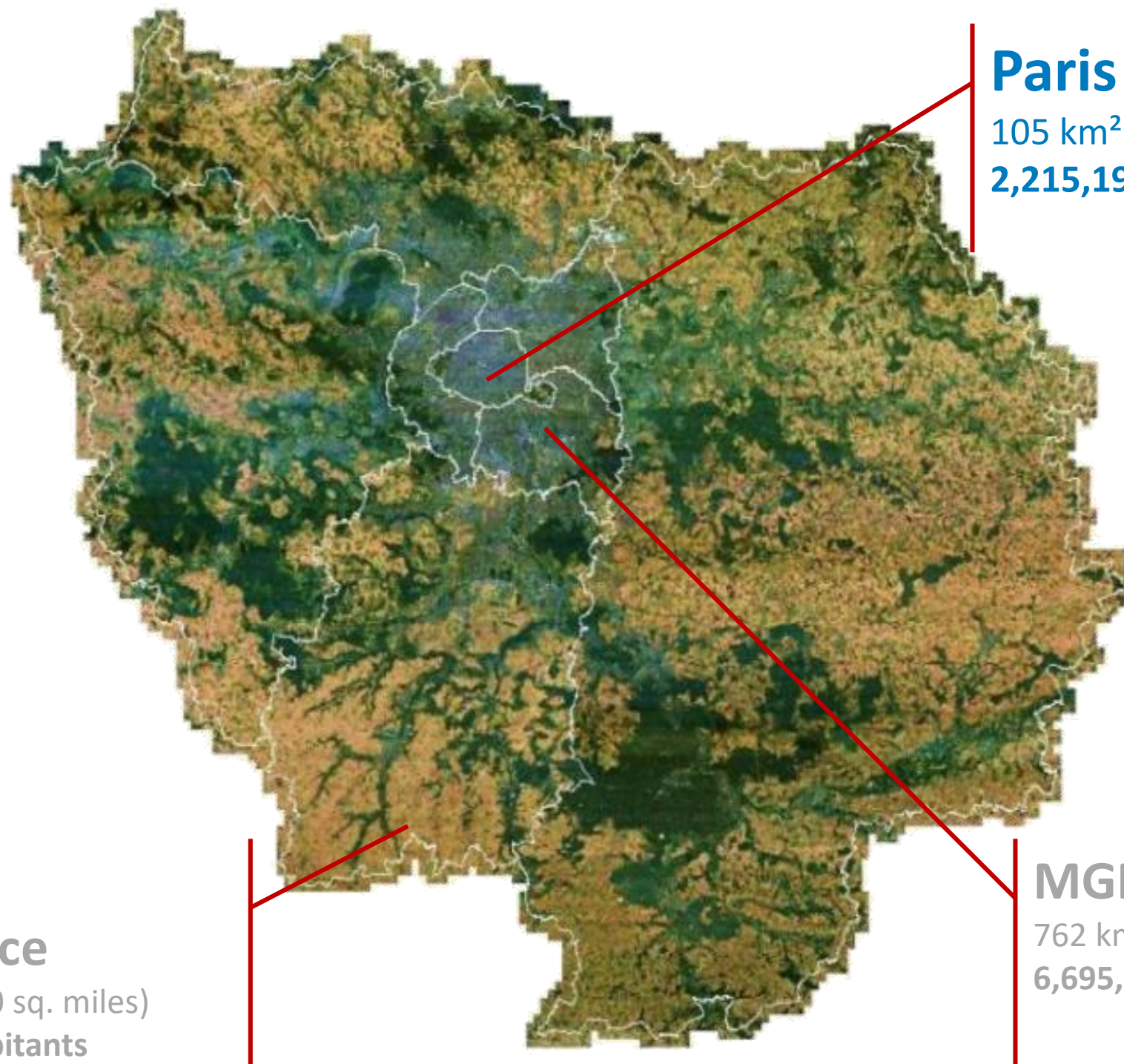
PARIS' VISION

Paris' new climate action plan



ici, demain!
ensemble pour le climat

Paris and its region



Paris

105 km² (40.5 sq. miles)
2,215,197 inhabitants

MGP

762 km² (295 sq. miles)
6,695,236 habitants

Region

Île-de-France

12,012 km² (4640 sq. miles)
11,746,000 inhabitants



1st Climate Actions Plan of Paris - commitments

Adopted unanimously 1st October 2007 and 11th December 2012

-75% GHG emissions by 2050 compare to 2004

-25% GHG emissions by 2020 compare to 2004

-25% energy consumption by 2020/2004

25% of renewable energies in the mix

Adapt Paris
to **climate change**
and **resources scarcity**





URBAN PLANNING FOR ENERGY EFFICIENCY

10% of Paris on high energy performances



LOW ENERGY AND AFFORDABLE HOUSING

36,000 social housing units retrofitted



THE TERTIARY SECTOR IN PARIS, A NEW CHALLENGE

Partnership contract with 49 major enterprises : 750,000 tCO₂e avoided



TOWARDS AIR QUALITY AND CLIMATE-FRIENDLY MOBILITIES

-39% of GHG emissions by 10y, NO diesel inside Paris by 2024



TOWARDS SUSTAINABLE CONSUMPTION, LESS WASTE-GENERATING

Decrease food waste and 1st organic food public purchaser



AN ADAPTATION STRATEGY

No Parisians far away of 7' walk from a cool place

10 years of action

More than 200 actions taken, including



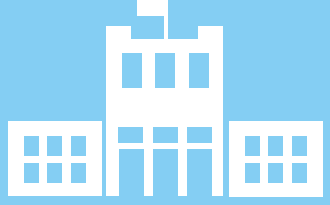
36,000
Energy renovated
social housing units



-39% GHG
From traffic in
central Paris




50
Paris Action Climat
signatories



Exemplary
Administration
-52,700 t.CO₂




+70 ha
new green spaces
open to the public



7%
local renewable
energy




-17,000 t.CO₂
on food service



- 3,636 GWh
2004-2014



-50,000 t.CO₂
on waste



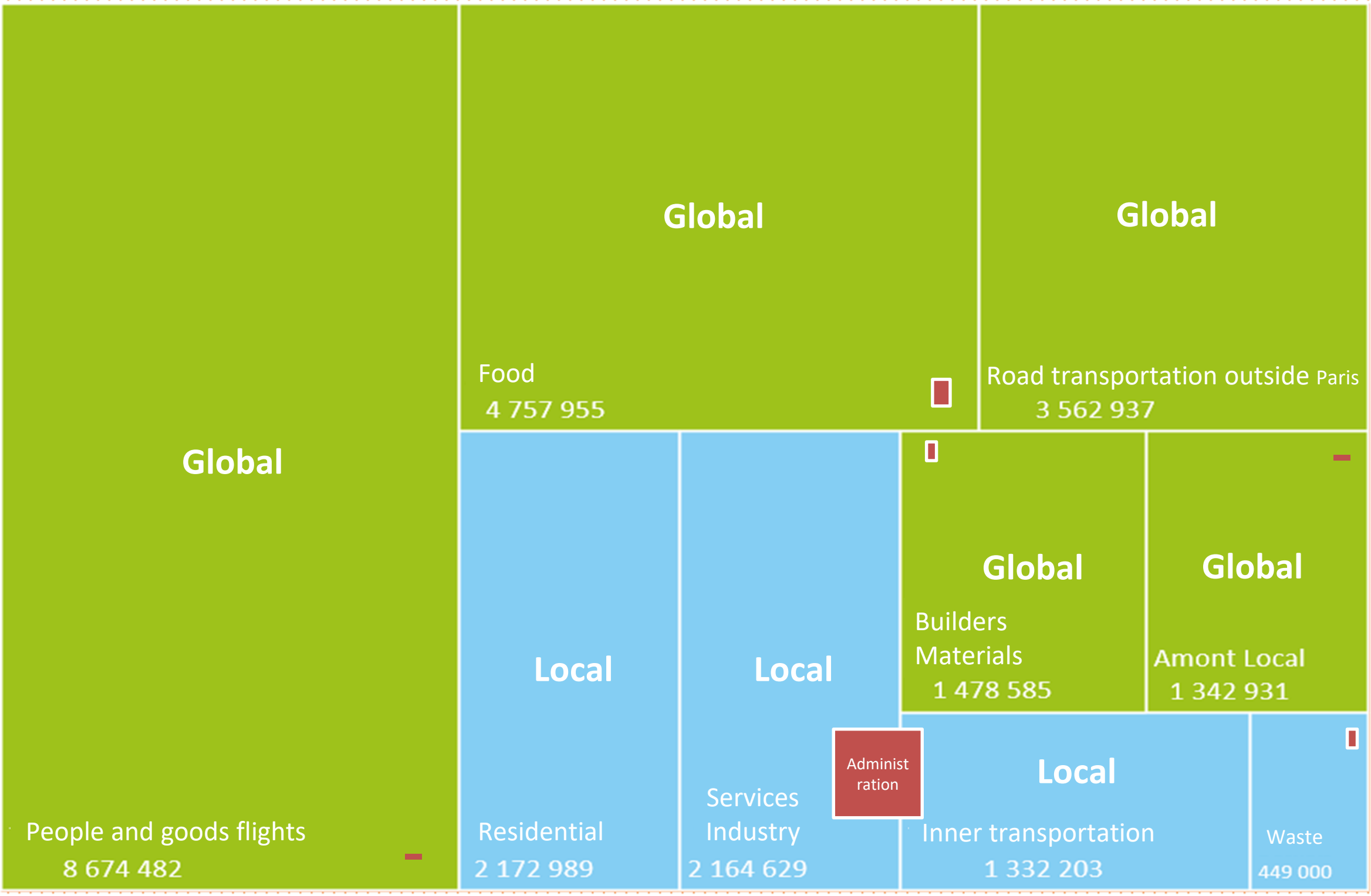
-9,2%
greenhouse gas
2004-2014

Paris' Carbon footprint



Administration
 <2% global
 emissions

Local GHG emissions (scope 1&2+waste)



Neutrality?

Zero fossil emission?

Zero fossil emission?

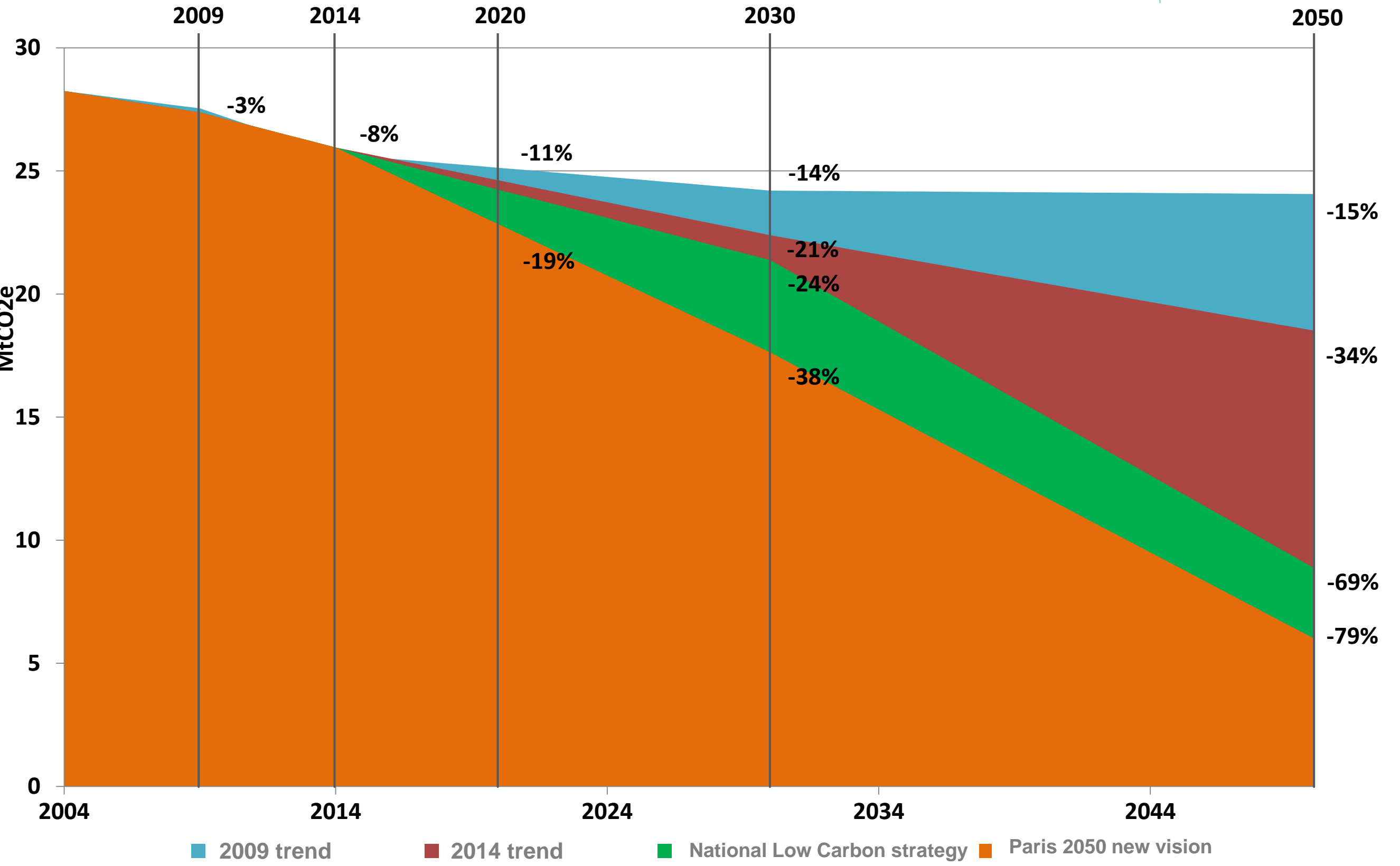
Zero gross emission?

Zero net emission?

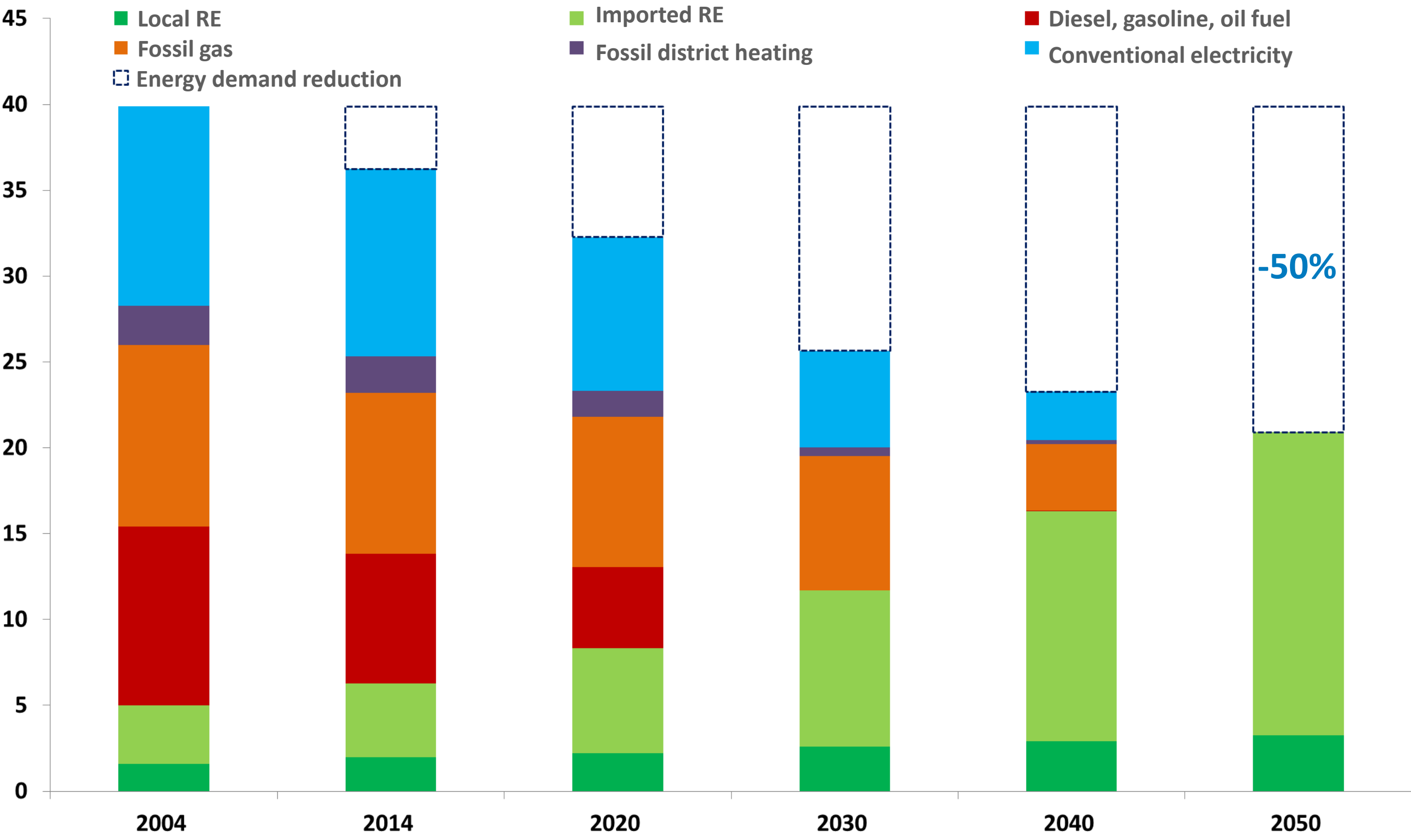
Local emission?

Global emission?

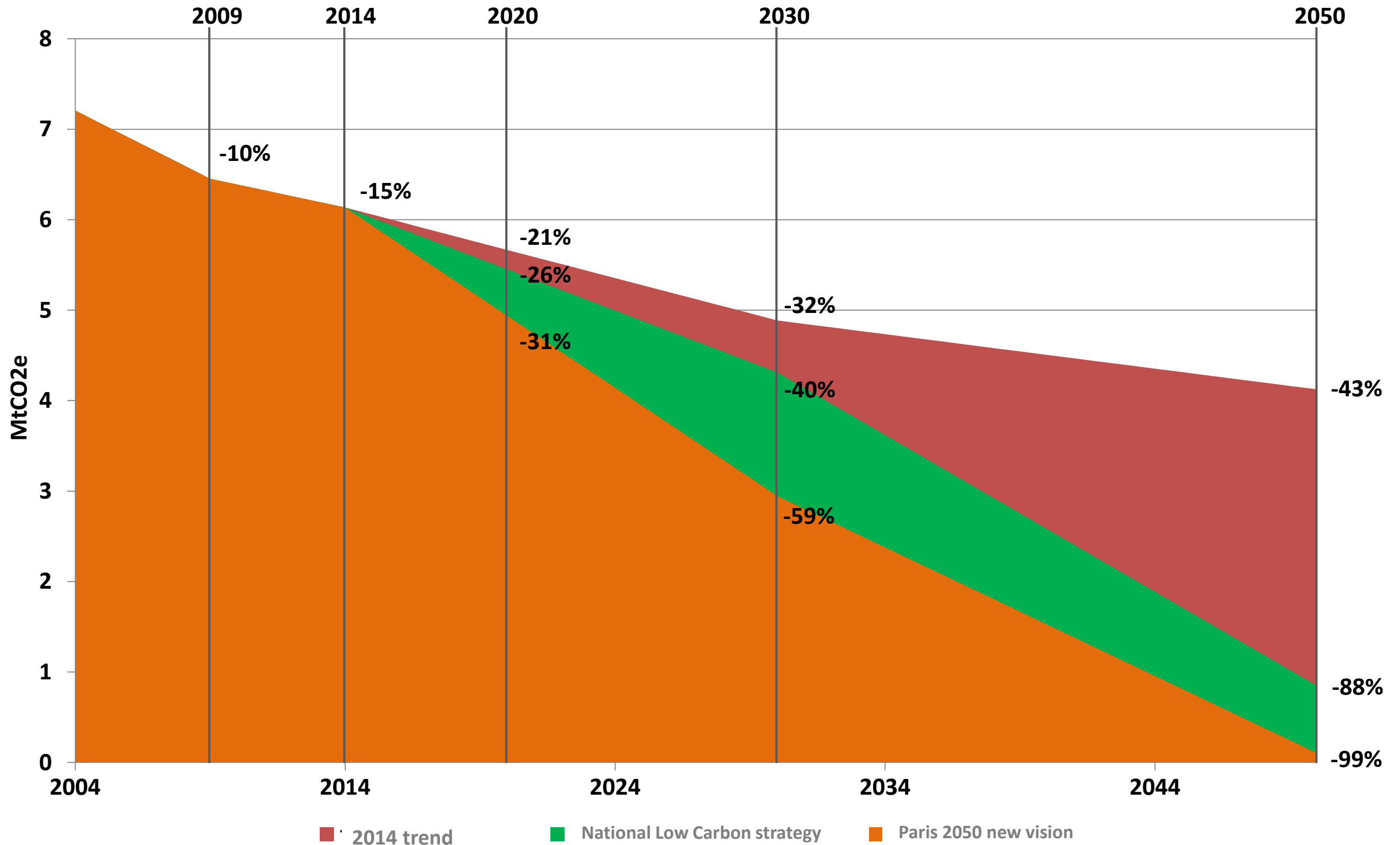
Paris' carbon footprint on 2050



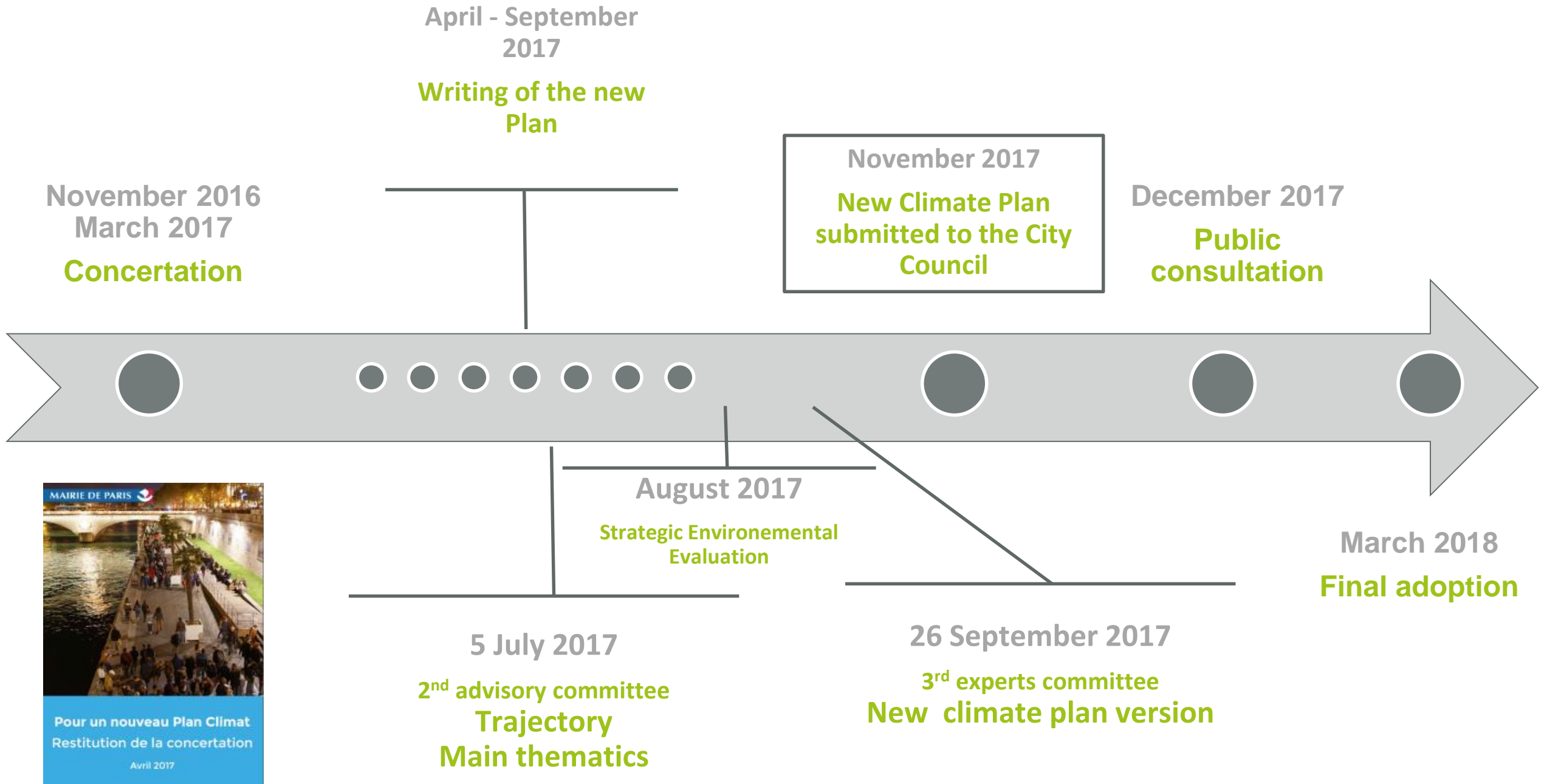
Divide by 2 energy demand



Local emissions evolution



Next steps and timelines



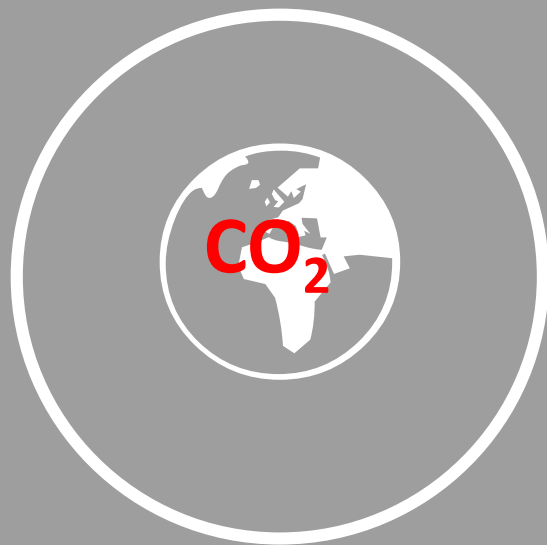


Zero GHG emissions
Intramuros
(LOCAL)

Key objectives 2050



100% of renewable energy
in the Paris consumption
including **20%** of local production



-80%
of Paris carbon footprint



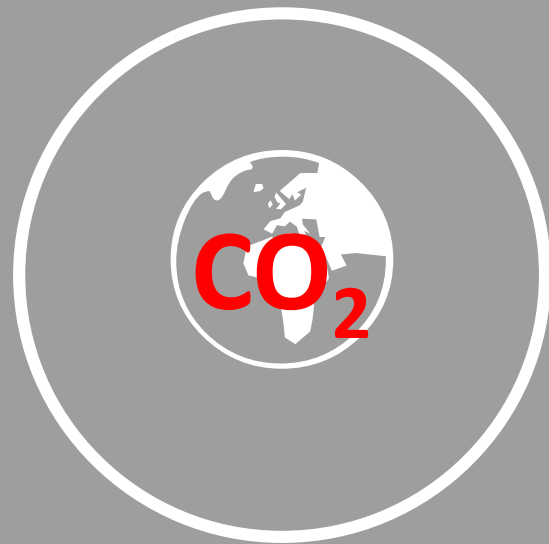
-50%
energy consumption
citywide
based on 2004



Offsetting 20%
residual emissions



-50% GHG emissions
Intramuros
(LOCAL)



-40%
of Paris carbon footprint

Key objectives 2030



-35%
energy consumption
citywide
based on 2004

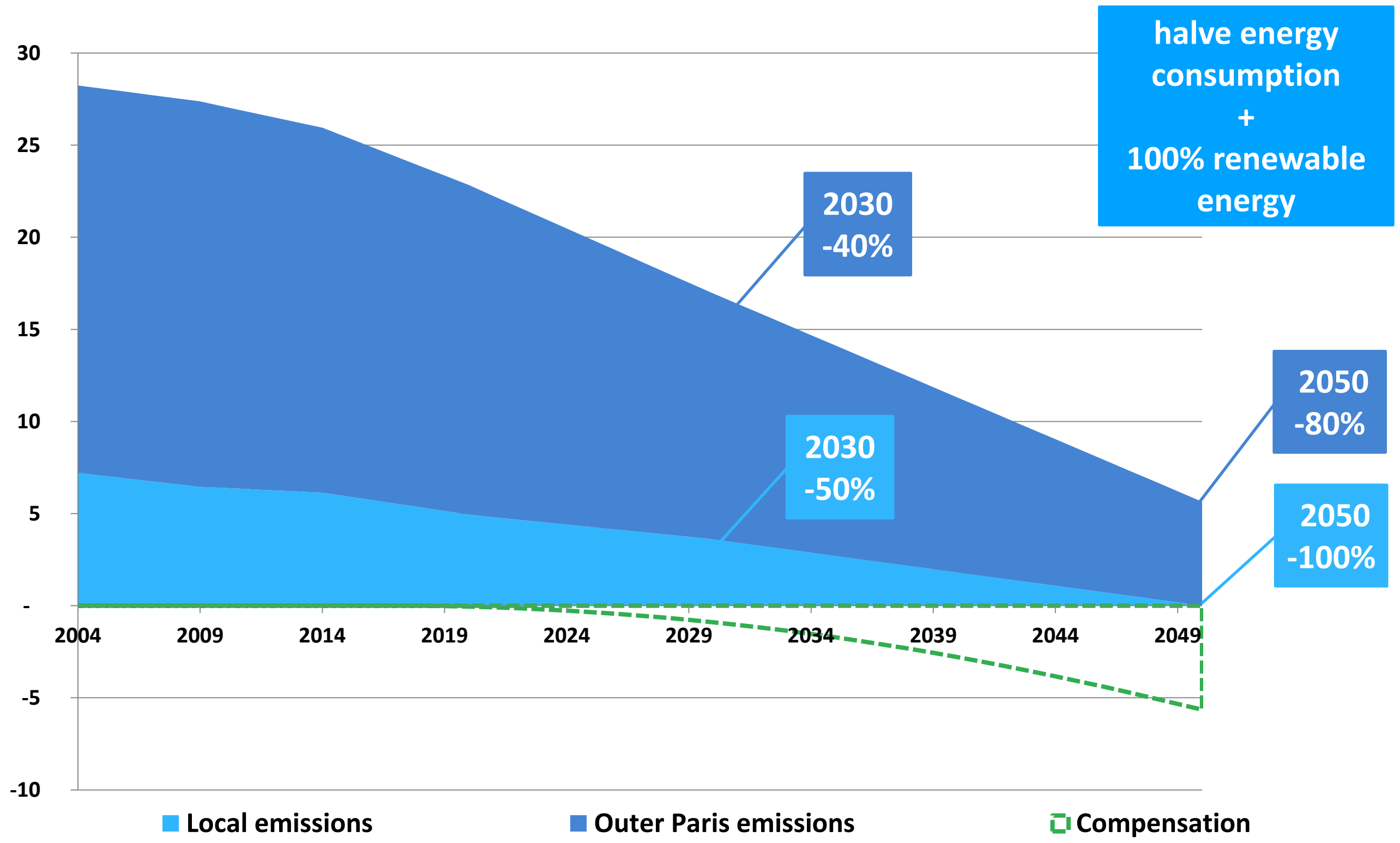


45% of renewable energy
in the Paris consumption
including **10%** of local production



Comply with the **WHO**
recommendations on
air quality

2050 goals: Paris, a carbon neutral city



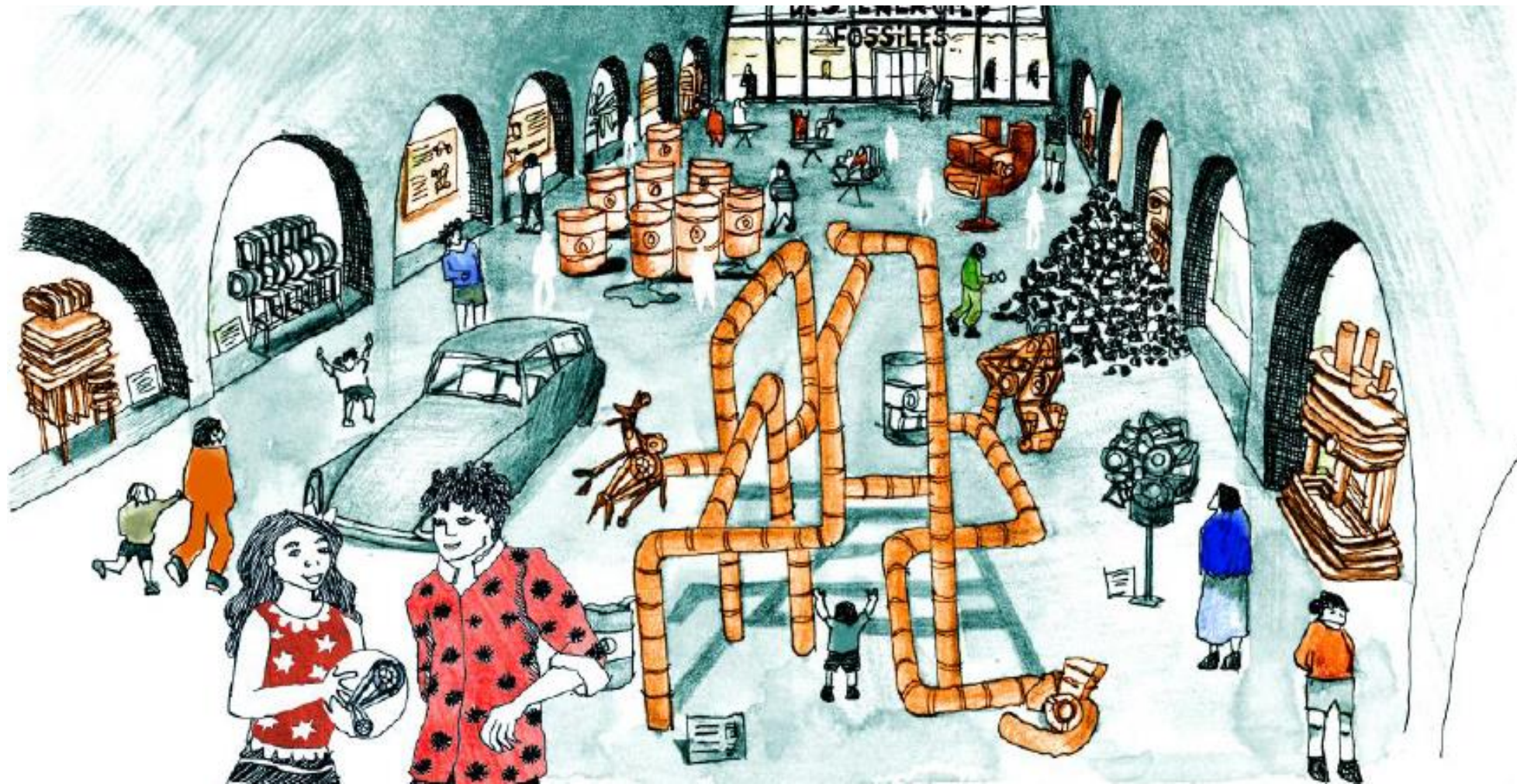
Key initiatives / key challenges





PARIS 100% RENEWABLES

RIGHT TO ACCESS CLEAN ENERGY





1 MILLION UNITS TO RETROFIT MINIMUM GAIN OF 50%

x27 A YEAR COMPARE TO NOW



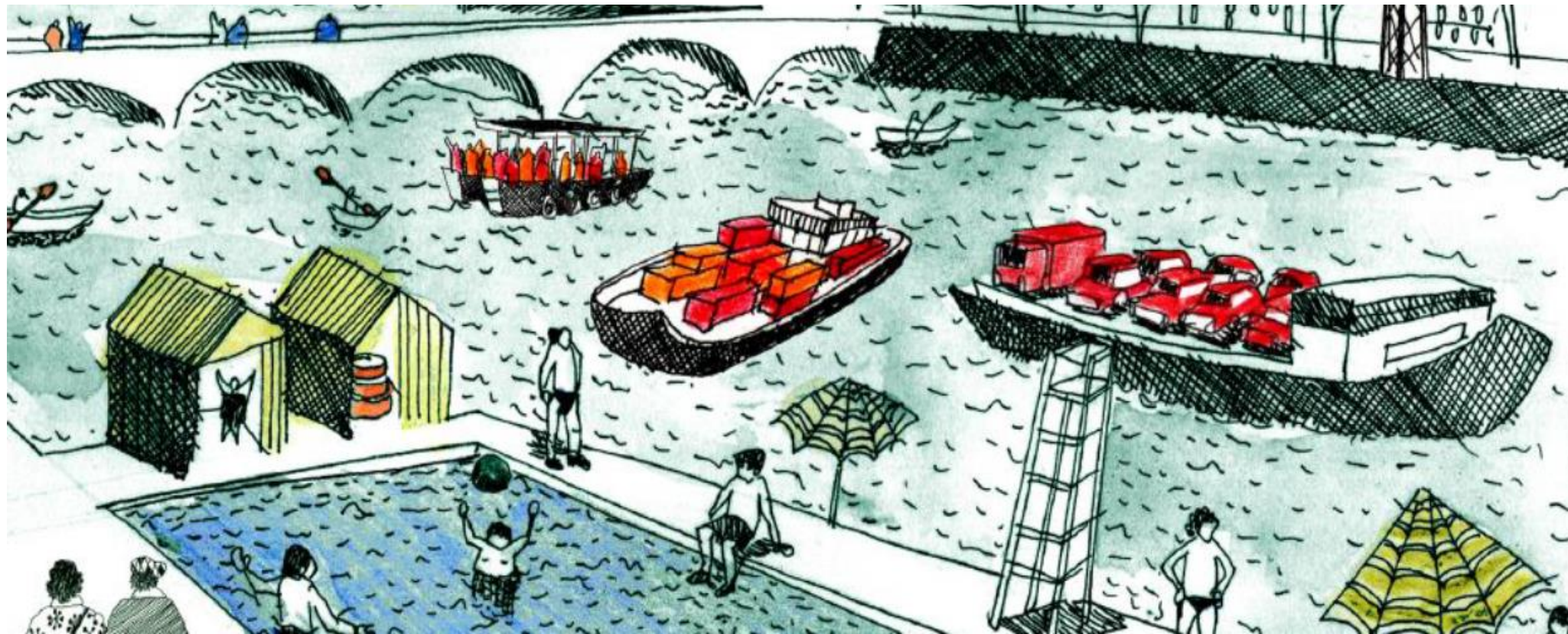


**INDIVIDUAL
MOBILITY**

50% OF THE WAY!
Zero emission Mobility

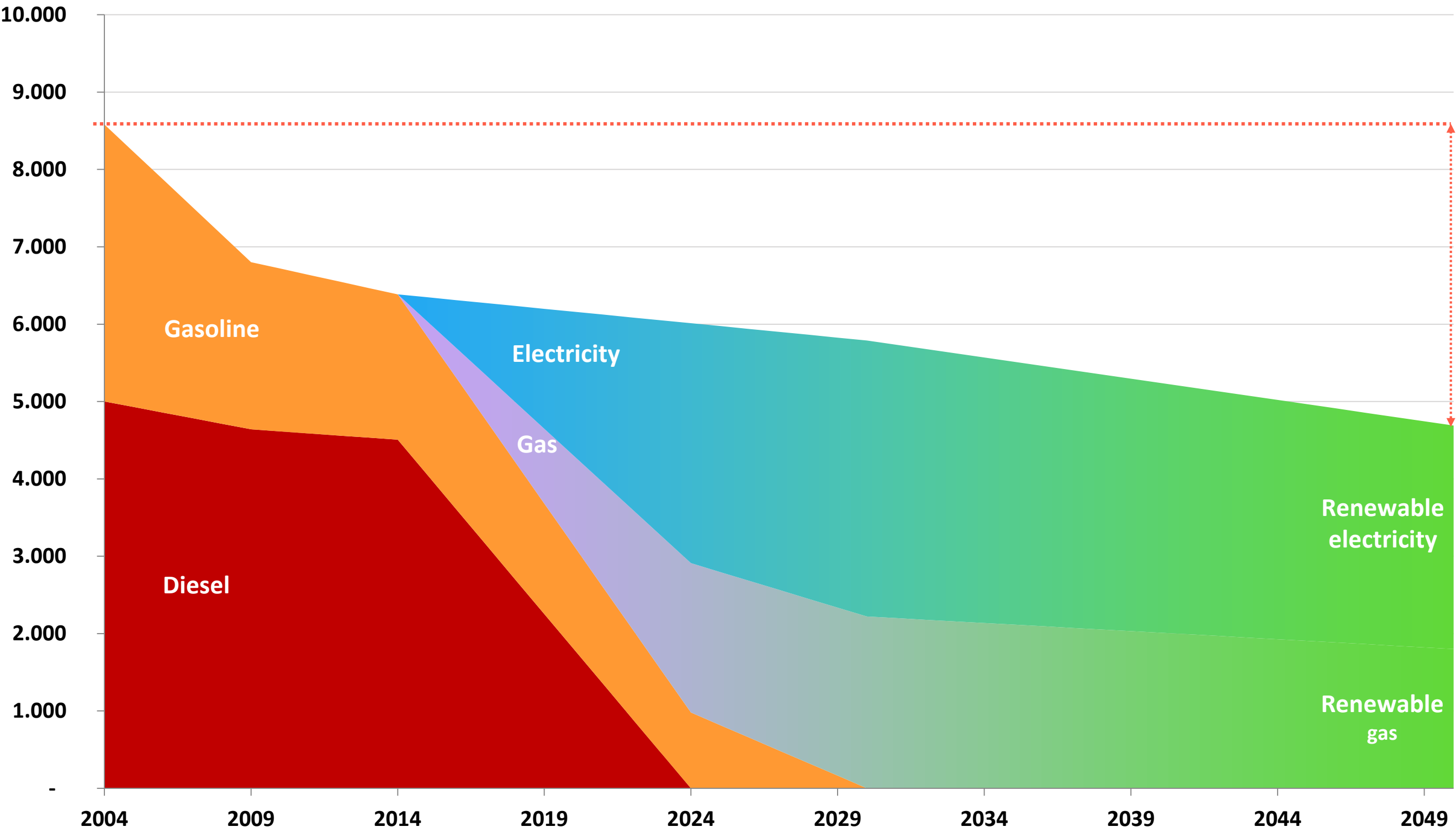
**TRANSPORT OF
GOODS**

**Carbon Neutral
Delivery**



Mobility issues

Local on-road transportation (Mkm)





FOOD

PARIS 100% ORGANIC and LOCAL

WASTE

ZERO WASTE



i Gracias !
Merci !
Thank you !



ici, demain!
ensemble pour le climat

Yann FRANÇOISE
yann.francoise@paris.fr
<http://planclimat.paris.fr>